

biome space

naturetech
habitat



The 1st 100% autonomous housing

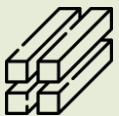
CONCEPT

BIOMESPACE IS A **NEW GENERATION** HOME, MADE UP OF MODULAR UNITS.

AUTONOMOUS IN WATER AND ENERGY, INDEPENDENT OF NETWORKS, **WITHOUT FOOTPRINT**, IT IS THE FIRST HIGH-TECH HOUSING, TRULY RESPECTFUL OF THE **ENVIRONMENT**

Biomespace is the first housing designed around "naturetech", technologies that support the implementation, acceleration and growth of biodiversity-related solutions. They encompass a range of actions designed to protect, sustainably manage and restore natural ecosystems.

Our sustainable materials



Steel structure



Wooden interiors



Cork insulation



Aluminum finishes



Openings glass

Our solution to the housing crisis

biome
space



Energy autonomy

Water autonomy

Sanitary autonomy

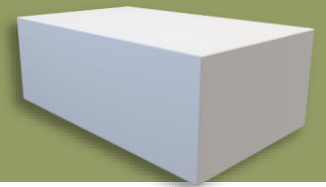
Non-artificialisation
of soils

Off-site production

Naturetech
Triple autonomy



Off-site modular
housing



USES & MODULARITY



MODULES 20m²

100% **autonomous** modules
Off-site factory construction
Without foundation and concrete
Dismountable, transportable,
modular in many assemblies, for all
types of uses

1 module of 20m² with all the
autonomy + additional
modules of 20m² to build
your home

INDIVIDUAL USES



From studio
(20m²) to T4
(80m²)

1 shared autonomy block +
20m² modules allowing you
to go up in R+2

COLLECTIVE USES



Senior, tourist,
youth and social
residences

Biomespace autonomy +
20m² modules to create
services and stores

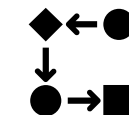
TERTIARY USES



Nurseries, co-
working space,
grocery store, etc.

Autonomous modules of 20m²,
movable, transportable and
reusable for different purposes

TEMPORARY USES



Emergency housing,
construction sites,
seasonal housing,

MODULAR OFFSITE

BIOMESPACE IS A MODULAR SOLUTION PRODUCED OFF-SITE, IN SERIES. ALL OUR BIOMESPACES ARE COMPOSED OF ONE OR MORE 20M² MODULES, WHOSE INTERIOR LAYOUT ADAPTS TO YOUR NEEDS.

MODULAR CONSTRUCTION



No concrete slab



No foundation



Installed on foundation screws



No land artificialisation

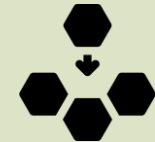


Dismountable, movable and transportable

OFF SITE MANUFACTURING



RE 2020
Meets standards and beyond. Positive house



Modular
Optimizes construction and enables modularity



Duration
Reduces the duration and complexity of construction sites

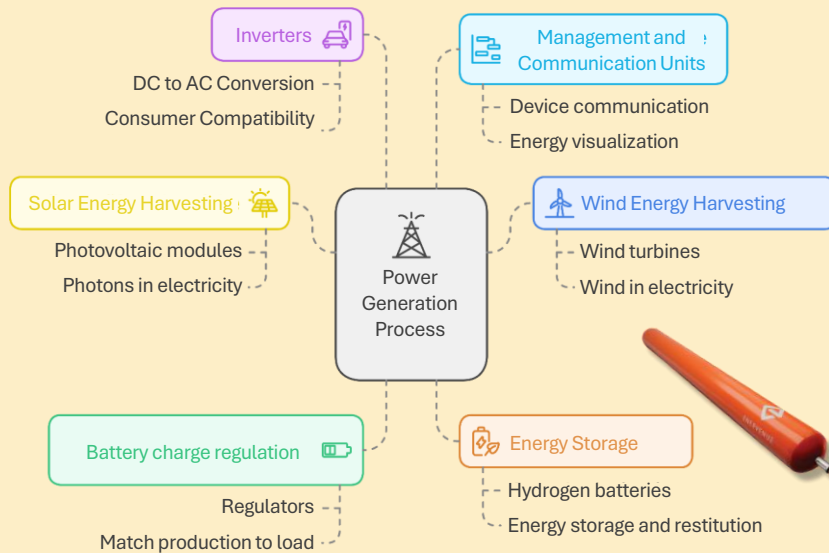


No reservations on delivery
Systematic control

NATURE TECH

BIOMESPACE IS THE FIRST MODERN 100% AUTONOMOUS HOME, INDEPENDENT OF ALL WATER, ENERGY AND SANITARY TREATMENT NETWORKS

ENERGY AUTONOMY



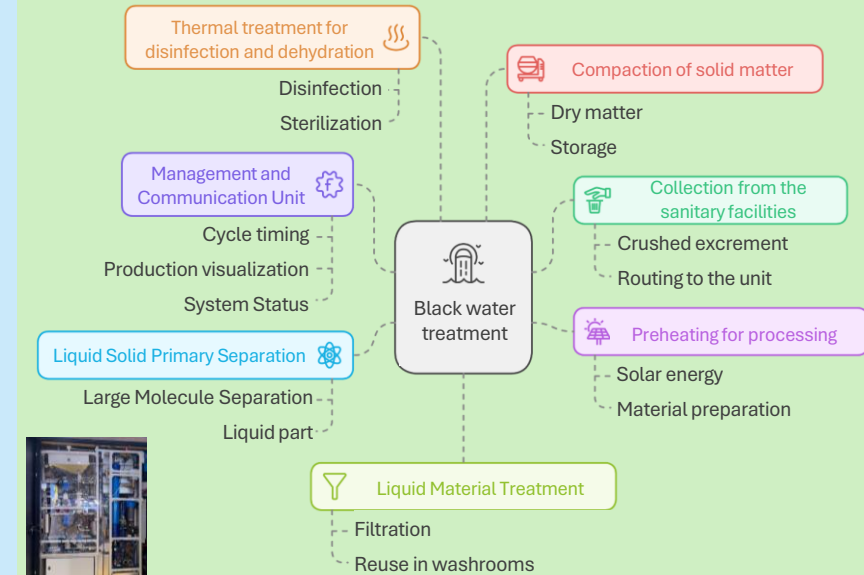
In order to respond to the future risks of the energy crisis and price fluctuations, biomespace offers innovative and multi-source solutions to produce your own energy.

WATER AUTONOMY



In order to meet the crucial challenges of managing the precious resource that is water, biomespace offers innovative and natural solutions to recycle it.

SANITARY AUTONOMY



In order to respond to the problems of collective water treatment facilities, Biomespace offers innovative solutions to recycle black water directly on site.

INDIVIDUAL HOUSING

20 to 80 m²

Included:

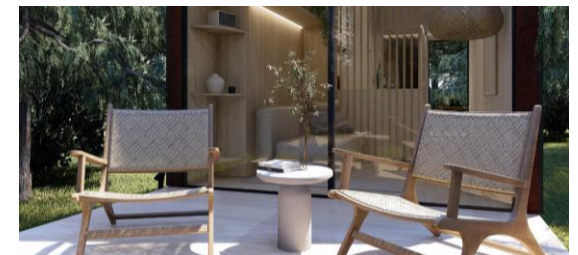
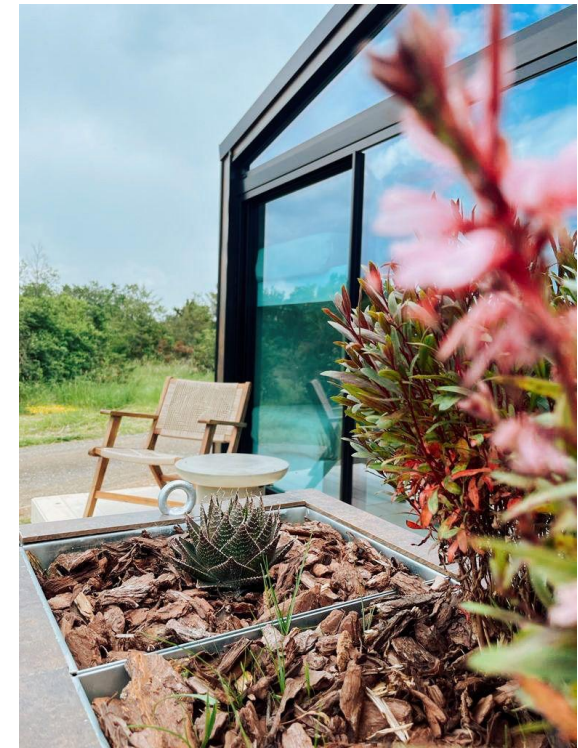
- ▮ Furnished
- ▮ Household appliance
- ▮ Hydraulic autonomy
- ▮ Electric range
- ▮ Home automation system
- ▮ Self-contained toilets
- ▮ Foundation screws (according to soil study)

Options:

- ▮ 3 types of roofs (modern, flat, classic)
- ▮ Different interior layouts possible
- ▮ Different degrees of empowerment, depending on the need

Functioning:

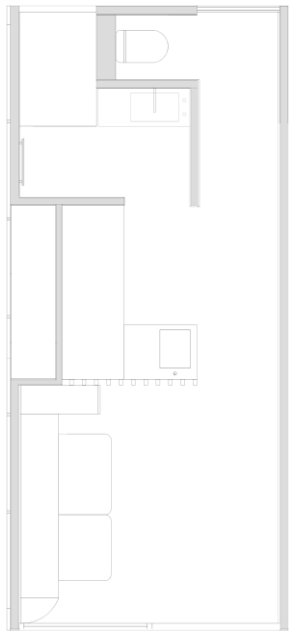
- ▮ Basic module "studio" 20m² with full autonomy
- ▮ + Add-ons (price less than per m²)



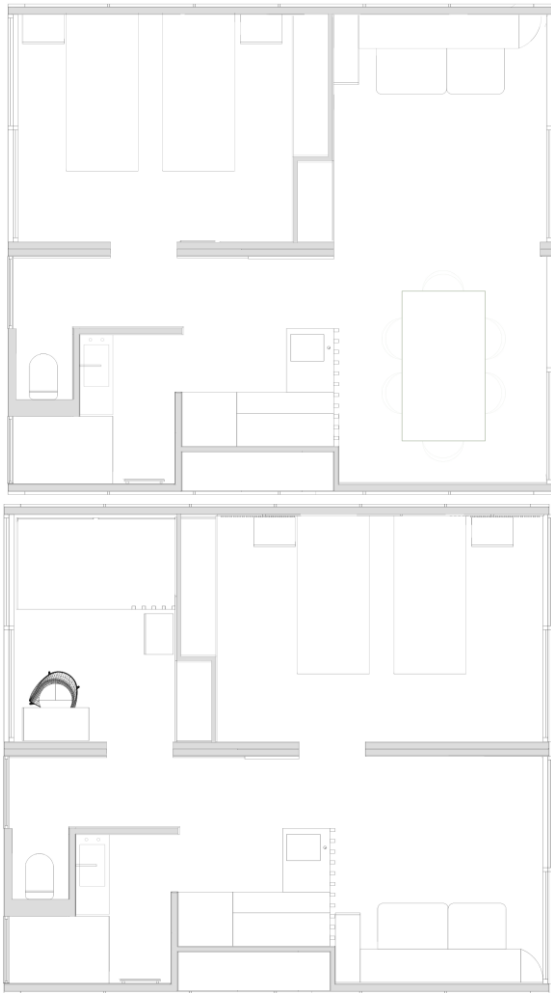
INDIVIDUAL HOUSING

Examples of modularity – plans

STUDIO 20 m²



T2 and T3 40 m²



T3 and T4 60 m²



T4 and T5 80 m²



COLLECTIVE HOUSING COMPACT

Social and student housing

Included :

- ▮ Furnished
- ▮ Household appliance
- ▮ Hydraulic autonomy
- ▮ Electric range
- ▮ Home automation system
- ▮ Self-contained toilets
- ▮ Foundation screws (according to soil study)

Functioning :

- ▮ From R+0 to R+2
- ▮ Shared autonomous technology brick (as needed)
- ▮ + "Biomespace" modules
- ▮ Allows you to create housing and common areas



It is a conceptual proposal that illustrates the possible combinations of the model that generates various types of buildings in order to respond and adapt to different urban challenges



biome
space

TERTIARY BUILDINGS

EXAMPLE DAYCARE CENTER

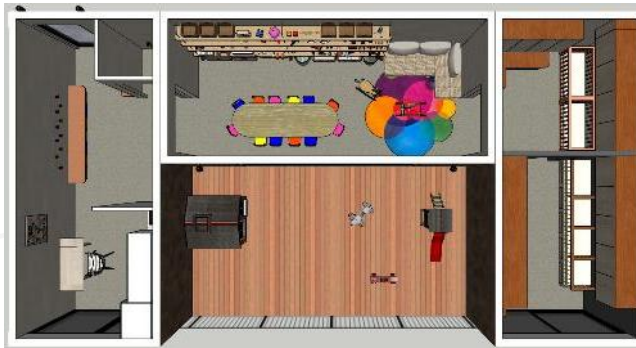
EXAMPLE COWORKING

Included:

- ▮ Furnished
- ▮ Hydraulic autonomy
- ▮ Electrical autonomy
- ▮ Home automation system
- ▮ Autonomous toilets
- ▮ Foundation screws (depending on soil study)

Operation:

- ▮ 20m² base module with full autonomy
- ▮ + Additional modules without autonomy
- ▮ Allows for the construction of all types of commercial buildings



COLLECTIVE HOUSING ECO-RESIDENCE

Tourist and senior residence

Included:

- ▮ Furnished
- ▮ Household appliance
- ▮ Hydraulic autonomy
- ▮ Electric range
- ▮ Home automation system
- ▮ Self-contained toilets
- ▮ Foundation screws (according to soil study)

Functioning:

- ▮ Shared autonomous technology brick (as needed)
- ▮ + "Biomespace" housing composed of one or more modules
- ▮ + common areas composed of a multitude of assembled modules



REWARD INNOVATION AWARD

In 2024, BIOMESPACE was awarded the silver medal in the "off-site" category of the BATIMAT Innovation Awards (World Building Exhibition).

This award recognizes the innovation represented by BIOMESPACE as the first 100% self-sufficient housing solution in terms of water, energy, and sanitation.



Biomespace
212 abonnés
1 an(s) •

Biomespace récompensé aux Awards de l'innovation !

Nous sommes fier de vous annoncer que la société Biomespace a été récompensé d'une médaille d'argent lors des awards de l'innovation du mondial du Bâtiment.

Le prix nous sera remis le 30 septembre prochain sur le salon Batimat

Nous espérons vous voir nombreux sur le salon du 30 septembre au 3 octobre (Stand H1-K018) pour découvrir le premier logement 100% autonome, sans aucune connexion aux réseaux d'eau, d'électricité et sanitaire !

www.biomespace.fr



OFFSITE

GOLD	LA BRIQUE DE GUYANE	SymbioFlex	Hall 1 - J105
SILVER	BIOMESPACE (Portugal)	Biomespace	Hall 1 - J018
SILVER	TECHNO PIEUX (France)	Techno Pieux	Hall 1 - P013
BRONZE	TECNOSTRUTTURE Srl (Italie)	NPS® FLEX	Hall 1 - W094

biome
space

PARTNERSHIPS

B4LOGIC

Biomespace is involved in several major partnerships

B4LOGIC

- Joint creation of a coating based on almond residues
- Bio-based, biodegradable, and circular
- This coating will be used in our modules
- B4logic is supported by the University of Minho and the MSTN group

Our mission

- B4Logic's mission is to create innovative and sustainable polymer compounds by incorporating recycled materials and natural industrial by-products, contributing to a more circular and eco-efficient plastics industry.

Circularity



Valorisation of by-products from clients' business areas

Customization



Custom and exclusive formulations tailored to clients' needs

R&D



Constant innovation following the latest scientific progress

Scalability



Ability to develop compoundings at various scales



b4logic
Good plastics. Circular with meaning.

Compoundings suitable for:

Injection



Extrusion



Blow



Thermoforming



b4logic
Good plastics. Circular with meaning.

biome
space

PARTNERSHIPS SENTINEL

Biomespace is involved in several major partnerships

SENTINEL

- b** A European project bringing together numerous major companies and institutions
- b** Advanced materials and new-generation technologies that are smart and efficient for monitoring, maintaining, and extending the lifespan of resilient and sustainable buildings.
- b** Biomespace has been chosen by our partners to test the new solutions developed as part of this program

Topic(s)	Title	Budget disponible (€)	Action(s)	Ouverture	Clôture	Clôture (2nde étape)
HORIZON-CL4-2025-05-MATERIALS-42-two-stage	Innovative Advanced Materials (IAMs) for product monitoring, smart maintenance and repair strategies in the construction sector (RIA) (Innovative Advanced Materials for Europe partnership)	30 000 000	HORIZON Research and Innovation Actions	22/05/2025	23/09/2025	14/04/2026

List of participating organisations

#	Participating Organisation Legal Name	Country	Role
1	ETHNIKO KENTRO EREVNAS KAI TECHNOLOGIKIS ANAPTY EL		Coordinator
2	UNIVERSITAT POLITECNICA DE VALENCIA	ES	Partner
3	FRAUNHOFER GESELLSCHAFT ZUR FORDERUNG DER ANG DE		Partner
4	UNINOVA-INSTITUTO DE DESENVOLVIMENTO DE NOVAS IPT		Partner
5	IKERLAN S. COOP	ES	Partner
6	RISE RESEARCH INSTITUTES OF SWEDEN AB	SE	Partner
7	ADVANCED MATERIAL SIMULATION SL	ES	Partner
8	DRAXIS RESEARCH VENTURES ASTIKI MI KERDOSKOPIKI ET EL		Partner
9	EXOS SOLUTIONS SL	ES	Partner
10	ATHENS TECHNOLOGY CENTER ANONYMI VIOMICHANIKI EL		Partner
11	INNOVATION IN RESEARCH & ENGINEERING SOLUTIONS BE		Partner
12	F6S NETWORK IRELAND LIMITED	IE	Partner
13	ALOUMYL, BIOMICHANIA ALOUMINIOY ANONIMI ETAIRIA EL		Partner
14	Biomespace, Lda	PT	Partner
15	SAINT-GOBAIN SEKURIT DEUTSCHLAND GMBH	DE	Partner
16	HORMICRUZ, S.L.	ES	Partner

PIC	Legal name
870876477	Biomespace, Lda
Short name: Biomespace	
Address	
Street	Zona Industrial, Polo 2, Lote 4
Town	Mira
Postcode	3070-492
Country	Portugal
Webpage	https://www.biomespace.fr/pt
Specific Legal Statuses	
Legal person	yes
Public body	no
Non-profit	no
International organisation	no
Secondary or Higher education establishment	no
Research organisation	no
SME Data	
Based on the below details from the Participant Registry the organisation is an SME (small- and medium-sized enterprise) for the call.	
SME self-declared status	26/06/2025 - yes
SME self-assessment	unknown
SME validation	unknown

horizon
europe

biome
space

PARTNERSHIPS AVEIRO UNIVERSITY

Biomespace is involved in several major partnerships

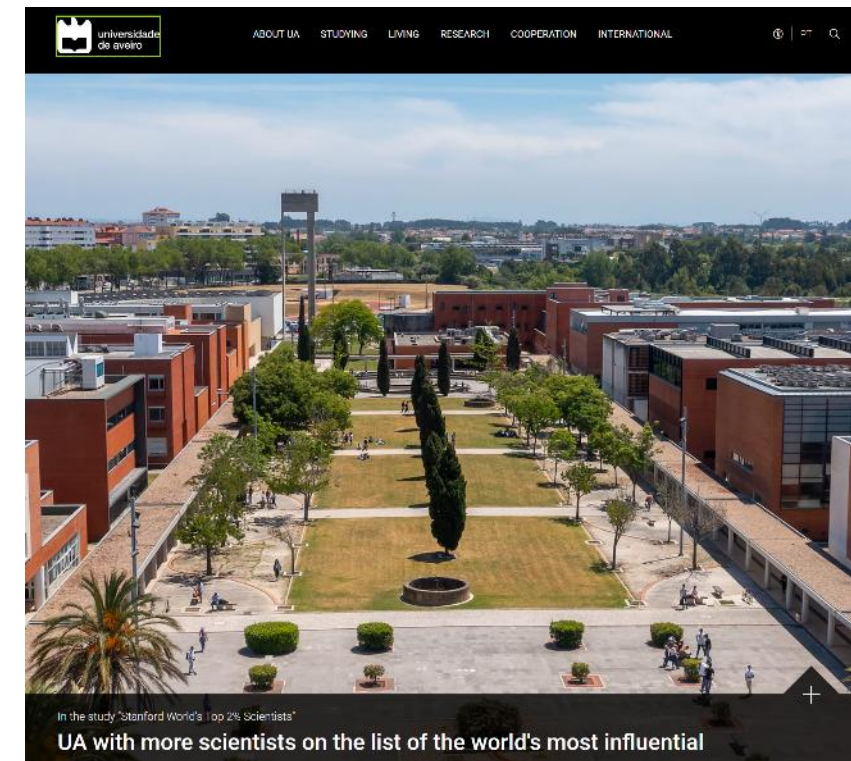
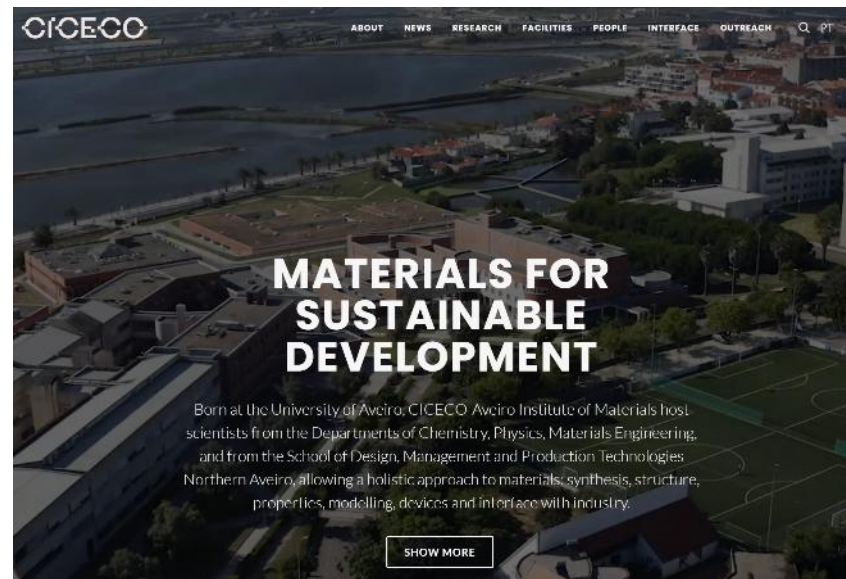
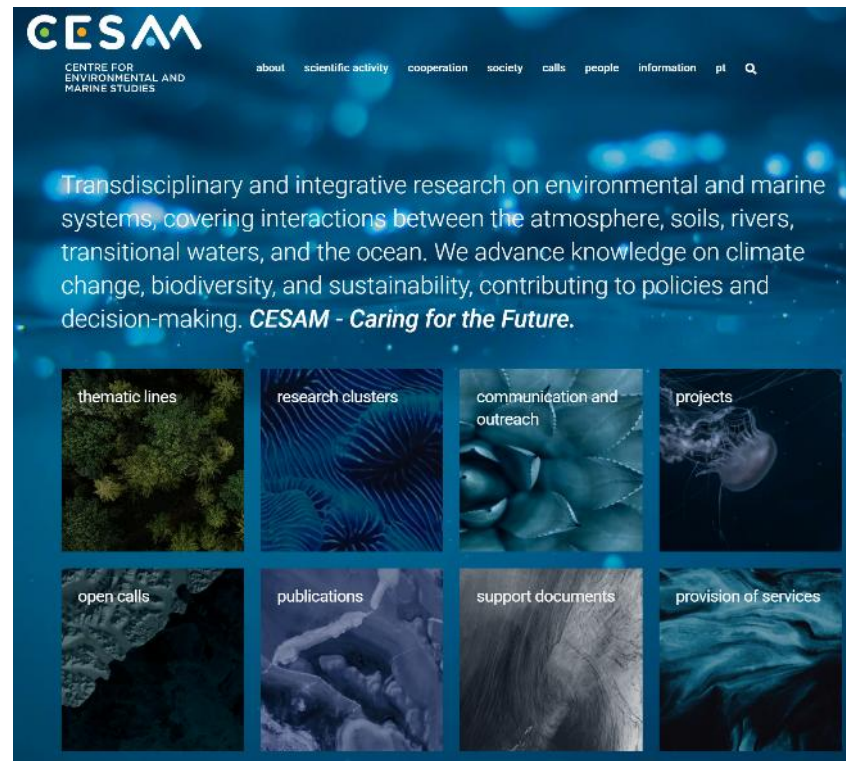
CERTIFICATIONS UNIVERSITY OF AVEIRO

- ▮ Partnership with the University of Aveiro
- ▮ Partnership with the departments of environment and planning, biology, and chemistry
- ▮ Partnership with three laboratories: LCA, CESAM, and CICECO
- ▮ Biomespace and the University of Aveiro will work together on a set of certifications
- ▮ Biomespace will test the innovations developed by the University of Aveiro



universidade
de aveiro

biome
space



PARTNERSHIPS

OLI

Biomespace is involved in several major partnerships

OLI

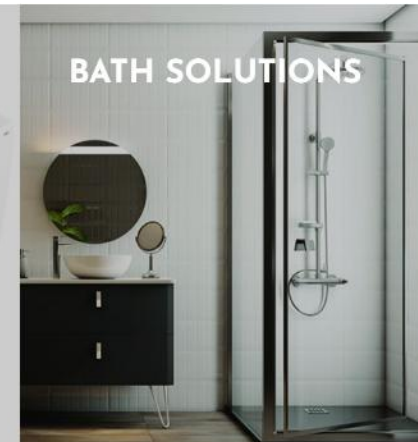
- ▮ Partnership with OLI
- ▮ Second largest company in the world in the construction and development of sanitary facilities
- ▮ Partnership for the industrialization of our patented autonomous toilet system (black water management) and our gray water management system.



OLI factory located a few dozen kilometers from our R&D workshop in Mire.




Toilet prototype prior to industrialization



biome
space

YOUR CONTACTS

 www.biomespace.fr
 www.biomespace.pt
 www.biomespace.fr/en



 Website

biome
space naturetech
habitat
France

12 Rue du Meunier, 95700
Roissy-en-France
Alain Legout
alain.legout@biomespace.fr
+33 (0)6.13.22.51.40

biome
space naturetech
habitat
Portugal

Rua do Pinhal Careca nº7
4740-254 Esposende
Joaquim Rodrigues
joaquim@biomespace.pt
+351 961 125 082